

## Test Report

No.: SZXEC25000839509

Date: Mar 24, 2025

Page 1 of 9

Client Name: GUANGDONG NIUHANG ELECTRONIC TECHNOLOGY CO., LTD

Client Address: 3RD FLOOR, BUILDING 1, NO.3 DAYUAN ROAD, ZHANGCUN, DONGCHENG STREET,  
DONGGUAN CITY, GUANGDONG PROVINCE

Sample Name: SemiconductorComponents

Model No.: SOD-323

Client Ref. Information: Please see attachment

The above sample(s) and information were provided by the client.

SGS Job No.: SZP25-012274

Sample Receiving Date: Mar 18, 2025

Testing Period: Mar 18, 2025 ~ Mar 24, 2025

Test Requested: Select test(s) as requested by the client.

Test Method(s): Please refer to next page(s).

Test Result(s): Please refer to next page(s).

Test Requirement	Conclusion
US California Proposition 65 - Bisphenol-A	Pass
US California Proposition 65 - Lead	Pass
US California Proposition 65 - Cadmium	Pass
US California Proposition 65 - Phthalate	Pass

Signed for and on behalf of  
SGS-CSTC Standards Technical Services Co., Ltd. Shenzhen Branch

Andy

Andy Ni  
Approved Signatory

Scan to see the report



3348B8D6

SGS-CSTC Standards Technical Services Co., Ltd.  
Shenzhen Branch

Unless otherwise agreed in writing, this document is issued by the Company subject to its General Conditions of Service printed overleaf, available on request or accessible at <https://www.sgs.com/en/Terms-and-Conditions>. Attention is drawn to the limitation of liability, indemnification and jurisdiction issues defined therein. Any holder of this document is advised that information contained hereon reflects the Company's findings at the time of its intervention only and within the limits of Client's instructions, if any. The Company's sole responsibility is to its Client and this document does not exonerate parties to a transaction from exercising all their rights and obligations under the transaction documents. This document cannot be reproduced except in full, without prior written approval of the Company. Any unauthorized alteration, forgery or falsification of the content or appearance of this document is unlawful and offenders may be prosecuted to the fullest extent of the law. Unless otherwise stated the results shown in this test report refer only to the sample(s) tested.

Attention: To check the authenticity of testing / inspection report & certificate, please contact us at telephone: (86-755) 8307 1443, or email: [CN.Doccheck@sgs.com](mailto:CN.Doccheck@sgs.com)

Room 101-001, Plant 4 & Room 101, Plant 2 & Room 101, Plant 3 & Room 301-501, Plant 3, Jiangnan (Bantian) Industrial Plant Area, No. 430, Jihua Road, Bantian Community, Bantian Street, Longgang District, Shenzhen, Guangdong, China 518129 [www.sgs.com.cn](http://www.sgs.com.cn)  
中国·广东·深圳市龙岗区坂田街道坂田社区吉华路430号江楠(坂田)工业厂区厂房4号101-001、2号101、3号101、3号301-501 邮编:518129 t:(86-755)25328888 [sgs.china@sgs.com](mailto:sgs.china@sgs.com)

## Test Report

No.: SZXEC25000839509

Date: Mar 24, 2025

Page 2 of 9

## Test Result(s):

## Test Part Description:

SN ID	Sample No.	SGS Sample ID	Description
SN1	A1	SZX25-0008395-0001.C001	"SemiconductorComponents"

## Remarks:

- (1) 1 mg/kg = 1 ppm = 0.0001%
- (2) MDL = Method Detection Limit
- (3) ND = Not Detected (< MDL)
- (4) "-" = Not Regulated

**US California Proposition 65 - Bisphenol-A**

**Test Method:** With reference to US EPA 3550C: 2007, analysis was performed by HPLC-DAD/MS / LC-MS/MS.

Test Item(s)	CAS No.	Limit	Unit(s)	MDL	A1
Bisphenol-A	80-05-7	3.0	mg/kg	1.0	ND
<b>Conclusion</b>					<b>Pass</b>

## Notes:

(1) The limit is referenced to the requirement specified in Settlement Agreement between Ferreiro and Superior Communications Inc.

(2) The reference limit applied in testing is based on particular California Proposition 65 settlements that are most similar to the tested product in the opinion of the lab. The testing in this report does not reflect a user's actual exposure to the tested chemical.

A manufacturer or retailer that is not named in the referenced settlement is not bound by that settlement, and may choose to comply with California Proposition 65 by clearly informing the consumer of potential exposure.

**US California Proposition 65 - Lead**

**Test Method:** With reference to CPSC-CH-E1002-08.3, analysis was performed by AAS/ICP-OES.

Test Item(s)	Limit	Unit(s)	MDL	A1
Lead (Pb)	100	mg/kg	20	ND
<b>Conclusion</b>				<b>Pass</b>

## Notes:

(1) The limit is referenced to the requirement specified in Settlement Agreement between San Francisco Case No. CGC-09-489839 and County of Los Angeles Superior Court Case No. BC 449019.

(2) The reference limit applied in testing is based on particular California Proposition 65 settlements that are most similar to the tested product in the opinion of the lab. The testing in this report does not reflect a user's actual exposure to the tested chemical.

A manufacturer or retailer that is not named in the referenced settlement is not bound by that settlement, and may choose to comply with California Proposition 65 by clearly informing the consumer of potential exposure.



Unless otherwise agreed in writing, this document is issued by the Company subject to its General Conditions of Service printed overleaf, available on request or accessible at <https://www.sgs.com/en/Terms-and-Conditions>. Attention is drawn to the limitation of liability, indemnification and jurisdiction issues defined therein. Any holder of this document is advised that information contained hereon reflects the Company's findings at the time of its intervention only and within the limits of Client's instructions, if any. The Company's sole responsibility is to its Client and this document does not exonerate parties to a transaction from exercising all their rights and obligations under the transaction documents. This document cannot be reproduced except in full, without prior written approval of the Company. Any unauthorized alteration, forgery or falsification of the content or appearance of this document is unlawful and offenders may be prosecuted to the fullest extent of the law. Unless otherwise stated the results shown in this test report refer only to the sample(s) tested.

Attention: To check the authenticity of testing /inspection report & certificate, please contact us at telephone: (86-755) 8307 1443, or email: [CN.Doccheck@sgs.com](mailto:CN.Doccheck@sgs.com)

SGS-CHINA Standards Technical Services Co., Ltd.  
Shenzhen Branch / Technical Services Laboratory

Room 101-901, Plant 4 & Room 101, Plant 2 & Room 101, Plant 3 & Room 301-501, Plant 3, Jianghao (Bantian) Industrial Plant Area, No. 430, Jihua Road, Bantian Community, Bantian Street, Longgang District, Shenzhen, Guangdong, China 518129 [www.sgs.com](http://www.sgs.com)  
中国·广东·深圳市龙岗区坂田街道坂田社区吉华路430号江豪(坂田)工业厂区厂房4号101-901、2号101、3号301-501 邮编:518129 t:(86-755)25328888 [sgs.china@sgs.com](mailto:sgs.china@sgs.com)

# Test Report

No.: SZXEC25000839509

Date: Mar 24, 2025

Page 3 of 9

## US California Proposition 65 - Cadmium

**Test Method:** With reference to CPSC-CH-E1002-08.3, analysis was performed by AAS/ICP-OES.

Test Item(s)	Limit	Unit(s)	MDL	A1
Cadmium(Cd)	300	mg/kg	5	ND
<b>Conclusion</b>				<b>Pass</b>

### Notes:

(1) The limit is referenced to the requirement as stated in County of Alameda Court Case No. RG-10-514803.

(2) The reference limit applied in testing is based on particular California Proposition 65 settlements that are most similar to the tested product in the opinion of the lab. The testing in this report does not reflect a user's actual exposure to the tested chemical.

A manufacturer or retailer that is not named in the referenced settlement is not bound by that settlement, and may choose to comply with California Proposition 65 by clearly informing the consumer of potential exposure.

## US California Proposition 65 - Phthalate

**Test Method:** With reference to CPSC-CH-C1001-09.4, analysis was performed by GC-MS.

Test Item(s)	CAS No.	Limit	Unit(s)	MDL	A1
Dibutyl Phthalate(DBP)	84-74-2	1000	mg/kg	50	ND
Benzyl Butyl Phthalate(BBP)	85-68-7	1000	mg/kg	50	ND
Bis-(2-ethylhexyl) Phthalate(DEHP)	117-81-7	1000	mg/kg	50	ND
Diisononyl Phthalate (DINP)	28553-12-0 /68515-48-0	1000	mg/kg	50	ND
Diisodecyl Phthalate (DIDP)	26761-40-0 /68515-49-1	1000	mg/kg	50	ND
Di-n-Hexyl Phthalate(DnHP)	84-75-3	1000	mg/kg	50	ND
<b>Conclusion</b>					<b>Pass</b>

### Notes:

(1) The limit is referenced to the requirement specified in Settlement Agreement between Marin Court Case No. CIV 091146 and County of Santa Clara Case No. 114CV267501.

(2) The reference limit applied in testing is based on particular California Proposition 65 settlements that are most similar to the tested product in the opinion of the lab. The testing in this report does not reflect a user's actual exposure to the tested chemical. A manufacturer or retailer that is not named in the referenced settlement is not bound by that settlement, and may choose to comply with California Proposition 65 by clearly informing the consumer of potential exposure.

Unless otherwise stated, the decision rule for conformity reporting is based on Binary Statement for Simple Acceptance Rule ( $w=0$ ) stated in ILAC-G8:09/2019.



Unless otherwise agreed in writing, this document is issued by the Company subject to its General Conditions of Service printed overleaf, available on request or accessible at <https://www.sgs.com/en/Terms-and-Conditions>. Attention is drawn to the limitation of liability, indemnification and jurisdiction issues defined therein. Any holder of this document is advised that information contained hereon reflects the Company's findings at the time of its intervention only and within the limits of Client's instructions, if any. The Company's sole responsibility is to its Client and this document does not exonerate parties to a transaction from exercising all their rights and obligations under the transaction documents. This document cannot be reproduced except in full, without prior written approval of the Company. Any unauthorized alteration, forgery or falsification of the content or appearance of this document is unlawful and offenders may be prosecuted to the fullest extent of the law. Unless otherwise stated the results shown in this test report refer only to the sample(s) tested.

Attention: To check the authenticity of testing /inspection report & certificate, please contact us at telephone: (86-755) 8307 1443, or email: [CN.Doccheck@sgs.com](mailto:CN.Doccheck@sgs.com)

Room 101-901, Plant 4 & Room 101, Plant 2 & Room 101, Plant 3 & Room 301-501, Plant 3, Jianghao (Bantian) Industrial Plant Area, No. 430, Jihua Road, Bantian Community, Bantian Street, Longgang District, Shenzhen, Guangdong, China 518129 [www.sgs.com](http://www.sgs.com)  
中国·广东·深圳市龙岗区坂田街道坂田社区吉华路430号江豪(坂田)工业厂区厂房4号101-901、2号101、3号301-501 邮编:518129 t:(86-755)25328888 [sgs.china@sgs.com](mailto:sgs.china@sgs.com)

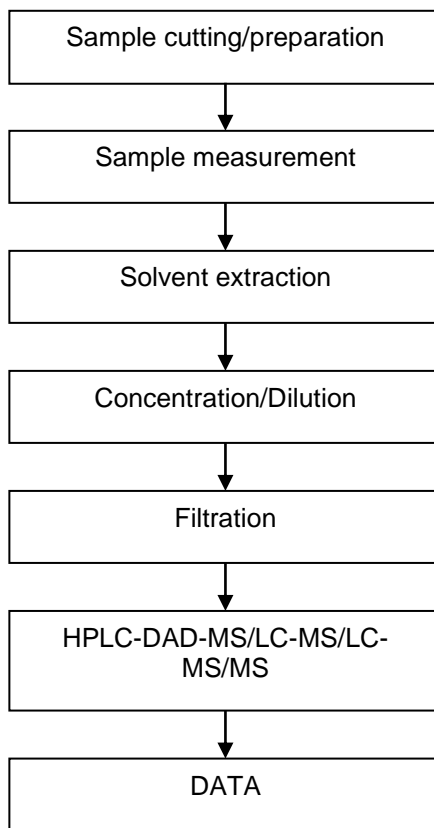
## Test Report ATTACHMENTS

No.: SZXEC25000839509

Date: Mar 24, 2025

Page 4 of 9

### Bisphenols Testing Flow Chart



SGS Standards Technical Services Co., Ltd.  
Shenzhen Branch

Unless otherwise agreed in writing, this document is issued by the Company subject to its General Conditions of Service printed overleaf, available on request or accessible at <https://www.sgs.com/en/Terms-and-Conditions>. Attention is drawn to the limitation of liability, indemnification and jurisdiction issues defined therein. Any holder of this document is advised that information contained hereon reflects the Company's findings at the time of its intervention only and within the limits of Client's instructions, if any. The Company's sole responsibility is to its Client and this document does not exonerate parties to a transaction from exercising all their rights and obligations under the transaction documents. This document cannot be reproduced except in full, without prior written approval of the Company. Any unauthorized alteration, forgery or falsification of the content or appearance of this document is unlawful and offenders may be prosecuted to the fullest extent of the law. Unless otherwise stated the results shown in this test report refer only to the sample(s) tested.

Attention: To check the authenticity of testing /inspection report & certificate, please contact us at telephone: (86-755) 8307 1443, or email: [CN.Doccheck@sgs.com](mailto:CN.Doccheck@sgs.com)

Room 101-901, Plant 4 & Room 101, Plant 2 & Room 101, Plant 3 & Room 301-501, Plant 3, Jianghao (Bantian) Industrial Plant Area, No. 430, Jihua Road, Bantian Community, Bantian Street, Longgang District, Shenzhen, Guangdong, China 518129 [www.sgs.com.cn](http://www.sgs.com.cn)  
中国·广东·深圳市龙岗区坂田街道坂田社区吉华路430号江豪(坂田)工业厂区厂房4号101-901、2号101、3号301-501 邮编:518129 t:(86-755)25328888 [sgs.china@sgs.com](mailto:sgs.china@sgs.com)

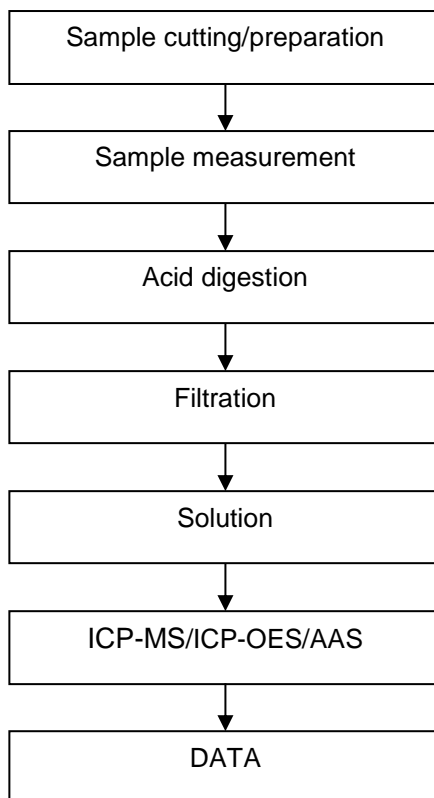
## Test Report ATTACHMENTS

No.: SZXEC25000839509

Date: Mar 24, 2025

Page 5 of 9

### Elements Testing Flow Chart



SGS Standards Technical Service Co., Ltd.  
Shenzhen Branch Inspection & Testing Services Laboratory

Unless otherwise agreed in writing, this document is issued by the Company subject to its General Conditions of Service printed overleaf, available on request or accessible at <https://www.sgs.com/en/Terms-and-Conditions>. Attention is drawn to the limitation of liability, indemnification and jurisdiction issues defined therein. Any holder of this document is advised that information contained hereon reflects the Company's findings at the time of its intervention only and within the limits of Client's instructions, if any. The Company's sole responsibility is to its Client and this document does not exonerate parties to a transaction from exercising all their rights and obligations under the transaction documents. This document cannot be reproduced except in full, without prior written approval of the Company. Any unauthorized alteration, forgery or falsification of the content or appearance of this document is unlawful and offenders may be prosecuted to the fullest extent of the law. Unless otherwise stated the results shown in this test report refer only to the sample(s) tested.

Attention: To check the authenticity of testing /inspection report & certificate, please contact us at telephone: (86-755) 8307 1443, or email: [CN.Doccheck@sgs.com](mailto:CN.Doccheck@sgs.com)

Room 101-901, Plant 4 & Room 101, Plant 2 & Room 101, Plant 3 & Room 301-501, Plant 3, Jianghao (Bantian) Industrial Plant Area, No. 430, Jihua Road, Bantian Community, Bantian Street, Longgang District, Shenzhen, Guangdong, China 518129 [www.sgs.com.cn](http://www.sgs.com.cn)  
中国·广东·深圳市龙岗区坂田街道坂田社区吉华路430号江豪(坂田)工业厂区厂房4号101-901、2号101、3号301-501 邮编:518129 t:(86-755)25328888 [sgs.china@sgs.com](mailto:sgs.china@sgs.com)

## Test Report

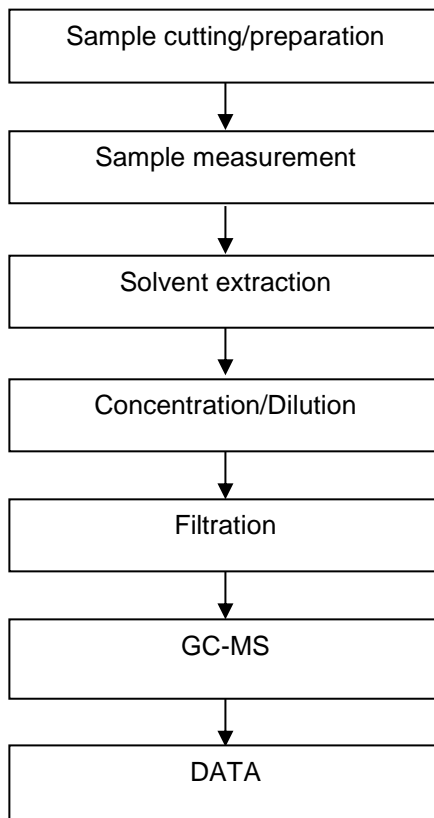
### ATTACHMENTS

No.: SZXEC25000839509

Date: Mar 24, 2025

Page 6 of 9

### Phthalates Testing Flow Chart



SGS-CSI Standards Technical Service Co., Ltd.  
Shenzhen Branch Inspection & Testing Services Laboratory

Unless otherwise agreed in writing, this document is issued by the Company subject to its General Conditions of Service printed overleaf, available on request or accessible at <https://www.sgs.com/en/Terms-and-Conditions>. Attention is drawn to the limitation of liability, indemnification and jurisdiction issues defined therein. Any holder of this document is advised that information contained hereon reflects the Company's findings at the time of its intervention only and within the limits of Client's instructions, if any. The Company's sole responsibility is to its Client and this document does not exonerate parties to a transaction from exercising all their rights and obligations under the transaction documents. This document cannot be reproduced except in full, without prior written approval of the Company. Any unauthorized alteration, forgery or falsification of the content or appearance of this document is unlawful and offenders may be prosecuted to the fullest extent of the law. Unless otherwise stated the results shown in this test report refer only to the sample(s) tested.

Attention: To check the authenticity of testing /inspection report & certificate, please contact us at telephone: (86-755) 8307 1443, or email: [CN.Doccheck@sgs.com](mailto:CN.Doccheck@sgs.com)

Room 101-901, Plant 4 & Room 101, Plant 2 & Room 101, Plant 3 & Room 301-501, Plant 3, Jianghao (Bantian) Industrial Plant Area, No. 430, Jihua Road, Bantian Community, Bantian Street, Longgang District, Shenzhen, Guangdong, China 518129 [www.sgs.com](http://www.sgs.com)  
中国·广东·深圳市龙岗区坂田街道坂田社区吉华路430号江豪(坂田)工业厂区厂房4号101-901、2号101、3号301-501 邮编:518129 t:(86-755) 25328888 [sgs.china@sgs.com](mailto:sgs.china@sgs.com)

## Test Report

No.: SZXEC25000839509

Date: Mar 24, 2025

Page 7 of 9

Attachment:  
DIODE:

R-1, R-6, R-Series, A-405, DO-41, DO-15, DO-27(DO-201AD), DO-35, DO-201AC(SMA), DO-201AA(SMB), DO-201AB(SMC), DO-213AA, DO-213AB(LL-41), DO-218AB, DO-Series, TO-251, TO-251S, TO-252, PTO-252, TO-262, TO-263, TO-220AB, TO-220AC, TO-220C, TO-220C-2L, ITO-220AB, ITO-220AC, TO-220F, TO-220F-2L, TO-3P, TO-247, TO-247S, TO-277, TO-277A, TO-277B, TO-247, TO-247S, TO-3P, TO-3PS, TO-3PF, TO-264-3L, TO-264PLUS-3L, TO-Series TOLL, TOLT1, TOLT2, SOD-923, SOD-723, SOD-523, SOD-323, SOD-123, SOD-123FL, SOD-123HE, SOD-323HE, SOD-80(LL-34), SOD882, SOD Series SMAW, SMAF, SMAFL, SMAFHE, SMBF, SMBFL, SMP, SM Series 0402, 0603, 0805, 1206, SOT-23, SOT-89, SOT-223, SOT Series SC-88, SC-89, SC-70, SC Series, DFN0603, DFN1608, DFN1610, DFN2020, DFN2018, DFN Series, PDFN3\*3, PDFN5\*6, PDFN8\*8, PDFN Series, AK3 Series

BRIDGE RECTIFIER:

SM-1, MBF, MBFS, MBS, MBSS, MBM, ABS, ABF, AKB, TMBF, HBS, LDB-S, DB-1, DB-S, RS, RB, KBL, KBU, KBP, TBP, TBP-1, KBPC, GBP, GBPC, GBU, GBL, SGBJ, GBJ, KBJ, KBJL, BR, WOL, WOM, WOG, D3K, HV, GH, BCT, PSD, LD, SBL, BU, IBS, WOB, WOBM

DIODE MODULE、RECTIFIER MODULE、BRIDGE RECTIFIER MODULE:

MDC Series, QL Series, SQL Series, MDS Series, MDA Series, MDK Series, MDQ Series, XQ Series, KPBC Series

PHOTOVOLTAIC MODULE:

09E, QC3Q, Z8X, TS306X, JA005, 09ES

MOSFET、IGBT、SIC、GAN、SCR、TRIAC、TRANSISTOR:

DIP25, DIP24, DIP24F, DIP Series module, TO-92, TO-251, TO-251S, TO-252, TO-252-4L, PTO-252, TO-126, TO-220A, TO-220B, TO-220AB, TO-220C, ITO-220AB, TO-220F, TO-220FJ, TO-263, TO-263-5L, TO-263-6L, TO-263-7L, TO-262, TO-3P, TO-3PF, TO-247, TO-247S, TO-247L, TO-247H, TO-247-4L, TO-247Plus-3L, TO-247Plus-4L, TO-264-3L, TO-264PLUS-3L, TO Series, TOLL, TOLT1, TOLT2, SOT-23, SOT-23-3L, SOT-89, SOT-223, SOT-143, SOT Series, SOP-89, SOP-8, SOP Series, DFN3\*3, DFN5\*6, DFN8\*8, DFN2020, DFN3030, DFN Series, PDFN3\*3, PDFN3\*3-D, PDFN5\*6, PDFN5\*6-D, LFPK5\*6, PDFN8\*8, PDFN Series QFN3\*3, QFN Series

IC:

SOT-23-5/6, SOP-8/14/16/18/20/24/28/30/36/48, SOT Series, SSOP-8/14/16/18/20/24/28/36/48, SSOP Series, MSOP-10/14, MSOP Series, TSSOP-14/20/28, TSSOP Series, DIP-8/14/16/20/24/28/36/48, DIP Series, QFN16/20/24/28/32/40/48/64, QFN Series



Unless otherwise agreed in writing, this document is issued by the Company subject to its General Conditions of Service printed overleaf, available on request or accessible at <https://www.sgs.com/en/Terms-and-Conditions>. Attention is drawn to the limitation of liability, indemnification and jurisdiction issues defined therein. Any holder of this document is advised that information contained hereon reflects the Company's findings at the time of its intervention only and within the limits of Client's instructions, if any. The Company's sole responsibility is to its Client and this document does not exonerate parties to a transaction from exercising all their rights and obligations under the transaction documents. This document cannot be reproduced except in full, without prior written approval of the Company. Any unauthorized alteration, forgery or falsification of the content or appearance of this document is unlawful and offenders may be prosecuted to the fullest extent of the law. Unless otherwise stated the results shown in this test report refer only to the sample(s) tested.

Attention: To check the authenticity of testing / inspection report & certificate, please contact us at telephone: (86-755) 8307 1443, or email: [CN.Doccheck@sgs.com](mailto:CN.Doccheck@sgs.com)

SGS-CSI Standards Technical Services Co., Ltd.  
Shenzhen Branch

Room 101-901, Plant 4 & Room 101, Plant 2 & Room 101, Plant 3 & Room 301-501, Plant 3, Jiangnan (Bantian) Industrial Plant Area, No. 430, Jihua Road, Bantian Community, Bantian Street, Longgang District, Shenzhen, Guangdong, China 518129 [www.sgs.com.cn](http://www.sgs.com.cn)  
中国·广东·深圳市龙岗区坂田街道坂田社区吉华路430号江澜(坂田)工业厂区厂房4号101-901、2号101、3号301-501 邮编:518129 t:(86-755)25328888 [sgs.china@sgs.com](mailto:sgs.china@sgs.com)

## Test Report

No.: SZXEC25000839509

Date: Mar 24, 2025

Page 8 of 9

DFN6/8/10/20, DFN Series, LQPF32/44/48/52/64/100, LQPF Series

SOP-8L, SOP Series, SOP Series+

Low Dropout Regulator(LDO)、Three-terminal precision voltage regulator、Voltage Regulator:

SOT-23, SOT-89, SOT-223, SOT Series, TO-252, TO-220, TO-263, TO-263-5L, TO Series



SGS-CTE Standards Technical Service Co., Ltd.  
Shenzhen Branch

Unless otherwise agreed in writing, this document is issued by the Company subject to its General Conditions of Service printed overleaf, available on request or accessible at <https://www.sgs.com/en/Terms-and-Conditions>. Attention is drawn to the limitation of liability, indemnification and jurisdiction issues defined therein. Any holder of this document is advised that information contained hereon reflects the Company's findings at the time of its intervention only and within the limits of Client's instructions, if any. The Company's sole responsibility is to its Client and this document does not exonerate parties to a transaction from exercising all their rights and obligations under the transaction documents. This document cannot be reproduced except in full, without prior written approval of the Company. Any unauthorized alteration, forgery or falsification of the content or appearance of this document is unlawful and offenders may be prosecuted to the fullest extent of the law. Unless otherwise stated the results shown in this test report refer only to the sample(s) tested.

Attention: To check the authenticity of testing /inspection report & certificate, please contact us at telephone: (86-755) 8307 1443, or email: [CN.Doccheck@sgs.com](mailto:CN.Doccheck@sgs.com)

Room 101-901, Plant 4 & Room 101, Plant 2 & Room 101, Plant 3 & Room 301-501, Plant 3, Jianghao (Bantian) Industrial Plant Area, No. 430, Jihua Road, Bantian Community, Bantian Street, Longgang District, Shenzhen, Guangdong, China 518129 [www.sgs.com.cn](http://www.sgs.com.cn)  
中国·广东·深圳市龙岗区坂田街道坂田社区吉华路430号江豪(坂田)工业厂区厂房4号101-901、2号101、3号301-501 邮编:518129 t:(86-755)25328888 [sgs.china@sgs.com](mailto:sgs.china@sgs.com)

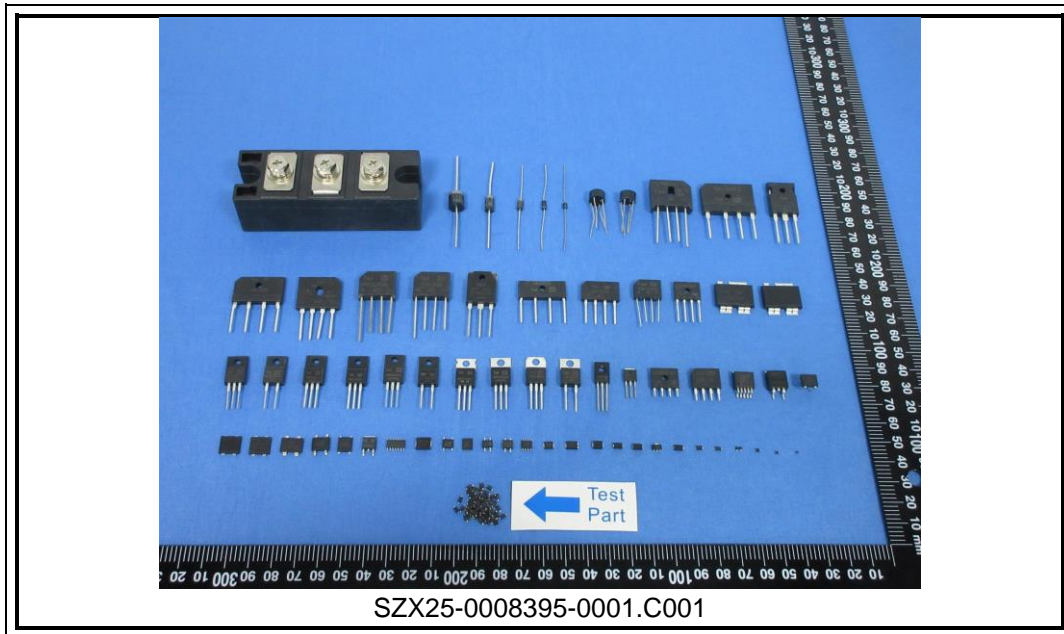
## Test Report

No.: SZXEC25000839509

Date: Mar 24, 2025

Page 9 of 9

Sample Photo:



SGS authenticate the photo on original report only

\*\*\* End of Report \*\*\*



Unless otherwise agreed in writing, this document is issued by the Company subject to its General Conditions of Service printed overleaf, available on request or accessible at <https://www.sgs.com/en/Terms-and-Conditions>. Attention is drawn to the limitation of liability, indemnification and jurisdiction issues defined therein. Any holder of this document is advised that information contained hereon reflects the Company's findings at the time of its intervention only and within the limits of Client's instructions, if any. The Company's sole responsibility is to its Client and this document does not exonerate parties to a transaction from exercising all their rights and obligations under the transaction documents. This document cannot be reproduced except in full, without prior written approval of the Company. Any unauthorized alteration, forgery or falsification of the content or appearance of this document is unlawful and offenders may be prosecuted to the fullest extent of the law. Unless otherwise stated the results shown in this test report refer only to the sample(s) tested.

Attention: To check the authenticity of testing /inspection report & certificate, please contact us at telephone: (86-755) 8307 1443, or email: [CN.Doccheck@sgs.com](mailto:CN.Doccheck@sgs.com)

Room 101-901, Plant 4 & Room 101, Plant 2 & Room 101, Plant 3 & Room 301-501, Plant 3, Jianghao (Bantian) Industrial Plant Area, No. 430, Jihua Road, Bantian Community, Bantian Street, Longgang District, Shenzhen, Guangdong, China 518129

中国·广东·深圳市龙岗区坂田街道坂田社区吉华路430号江豪(坂田)工业厂区厂房4号101-901、2号101、3号301-501 邮编:518129 t:(86-755) 25328888 sgs.china@sgs.com